

# GARDENIA LIFE

A brand new project in the city of Alanya waits you with its millennia-old history, culture and architecture, which is a blend of Mediterranean and Anatolian cultures. Our project is located in Alanya's most popular Cikcilli region. With modern architecture and high construction quality, it is the top class residential complex in the comfort class. Its trendy interior design will enchant you.

With a heating system, you can live a comfortable life. Thanks to high-quality soundproofing, you will find yourself in a quiet environment away from city noise. Aluminum carpentry is used on all facades.

Our project consists of a total of 3554 m<sup>2</sup>, two separate plots and two separate blocks.

On the 2170 m<sup>2</sup> property called Gardenia Life 1 there are a total of 22 apartments. 8 of them will be duplex apartments, 2 of them will be 2+1 apartments and 12 of them will be 1+1 apartments. Our property called Gardenia Life 2 is 1384 m<sup>2</sup> and has a total of 15 apartments. 5 of them are duplex and 10 of them are 1+1.

This project presents you a natural life in the city and feel it on every square meter. Each block has its own outdoor pool and common area. The sauna, massage rooms, fitness room, entertainment and meeting area, open parking lot, generator, children's playgrounds and elevators included in the concept have been designed for you with attention to the smallest detail.

All the areas you need around our complex which is 1km from the sea; Supermarkets, restaurants, pharmacies, ATMs, markets and hospitals are all within walking distance. This project, which brings income with its great rental potential, is located in the region where you can get a residence permit.

**Beginning: 15.09.2023**

**End: 15.05.2025**



Since 1987; chairmanship of the board; At the same time, Hasan SIPAHIOGLU and Gardenia Family, who made great contributions to the City of Alanya during his mayorship period for 3 terms, appear before you with the "GARDENIA LIFE" construction project as well as hotel businesses, cafe-restaurants.



**Our project; It has been delicately designed to create a warm, warm, peaceful and friendly environment.**

**Due to its perfect location, it is within walking distance of all the shopping centers and social areas you need. In addition, there are social activity areas specially designed for you in the content of our project. You can enjoy the pool and the sun under the unique orange trees.**



## Advantages:

- Our facility consists of 2 separate parcels and a total of 3555 m<sup>2</sup>, 1 km from the sea.
- The project is designed with greenery and afforestation.
- It is designed in a modern style, using high-quality first class.
- Walking paths, resting areas and decorative spots have been carefully designed for you.



Started Date: **September 2023**

Finished Date: **May 2025**

Our project consisting of 2 blocks and 37 flats in total:

Gardenia Life 1 (8\*duplex flats, 2\*(2+1) flats, 12\*(1+1) flats)

Gardenia Life 2 (5\*Duplex flats, 10\*(1+1) flats)

Activities:

-Two Outside Pools -Children's Playgrounds -Cafe Bar -Fitness -Sauna -Turkish Bath -Steam Room











**TRANSPORT:**

-5M Migros: 800 m

-Koçtas: 1 km

-Alanyum AVM: 900 m

-Public Hospital: 1.5 km



**PROJECT  
AREA**







### GARDENIA LIFE 1

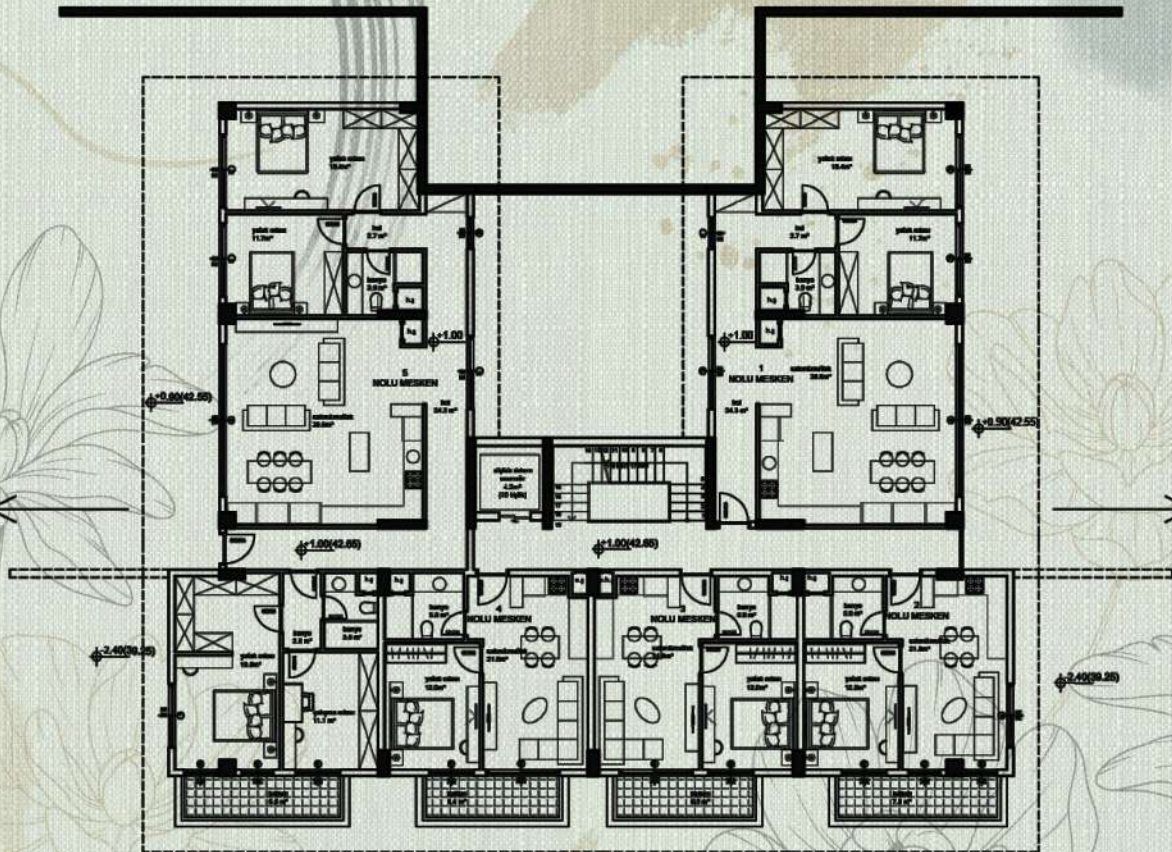
2. FLOOR + PENTHOUSE	22	2+1	21	2+1	20	2+1	19	2+1	18	2+1	17	2+1	16	2+1	15	2+1
	87 m2		97 m2		95 m2		88 m2		88 m2		94 m2		97 m2		87 m2	
1.FLOOR	14	1+1	13	1+1	12	1+1	11	1+1	10	1+1	9	1+1	8	1+1	7	1+1
	43 m2		43 m2		43 m2		42 m2		42 m2		43 m2		43 m2		43 m2	
GROUND FLOOR	6		2+1		5	1+1	4	1+1	3	1+1	2	1+1	1		2+1	
	102 m2				43 m2		42 m2		42 m2		43 m2		102 m2			
BASEMENT FLOOR	SOCIAL AREA															

### GARDENIA LIFE 2

2. FLOOR + PENTHOUSE	15	2+1	14	2+1	13	2+1	12	2+1	11	2+1
	87 m2		97 m2		84 m2		100 m2		84 m2	
1.FLOOR	10	1+1	9	1+1	8	1+1	7	1+1	6	1+1
	44 m2		44 m2		42 m2		45 m2		44 m2	
GROUND FLOOR	5	1+1	4	1+1	3	1+1	2	1+1	1	1+1
	44 m2		44 m2		42 m2		45 m2		44 m2	
BASEMENT FLOOR	SOCIAL AREA									

# 465/1 GROUND FLOOR PLAN

5  
NOLU MESKEN  
NET ALAN: 155.00 m<sup>2</sup>  
BRÜT ALAN: 170.00 m<sup>2</sup>



1  
NOLU MESKEN  
NET ALAN: 102.00 m<sup>2</sup>  
BRÜT ALAN: 110.00 m<sup>2</sup>

4  
NOLU MESKEN  
NET ALAN: 42.00 m<sup>2</sup>  
BRÜT ALAN: 58.00 m<sup>2</sup>

3  
NOLU MESKEN  
NET ALAN: 42.00 m<sup>2</sup>  
BRÜT ALAN: 58.00 m<sup>2</sup>

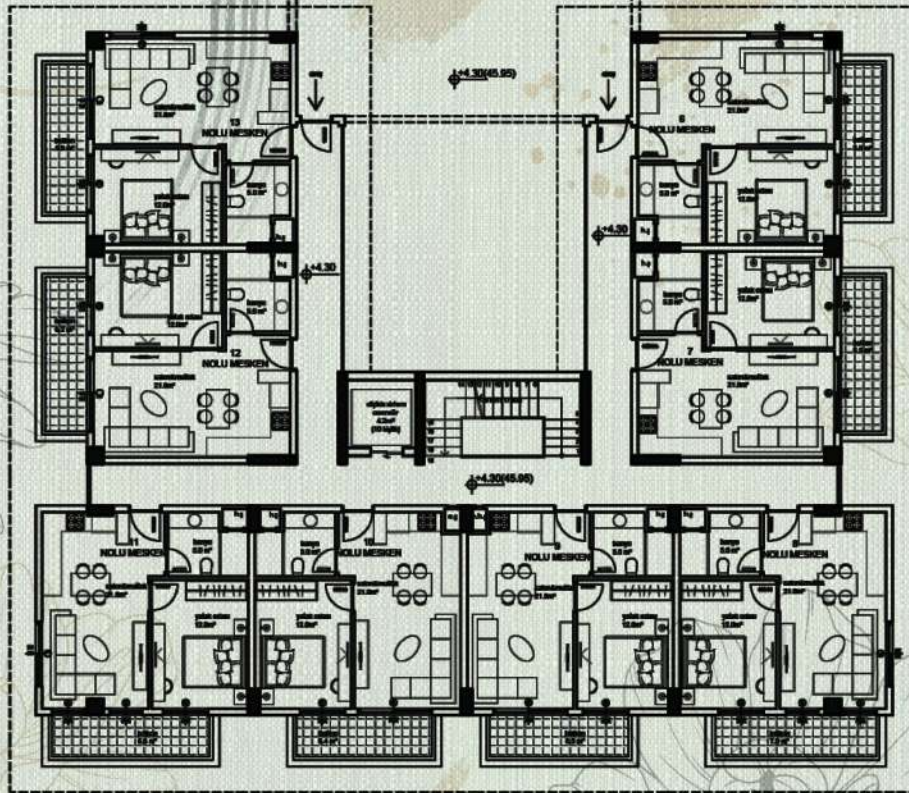
2  
NOLU MESKEN  
NET ALAN: 43.00 m<sup>2</sup>  
BRÜT ALAN: 58.00 m<sup>2</sup>



# 465/1. FLOOR PLAN

13  
NOLU MESKEN  
NET ALAN: 43.00 m<sup>2</sup>  
BRÜT ALAN: 59.00 m<sup>2</sup>

12  
NOLU MESKEN  
NET ALAN: 43.00 m<sup>2</sup>  
BRÜT ALAN: 59.00 m<sup>2</sup>



6  
NOLU MESKEN  
NET ALAN: 43.00 m<sup>2</sup>  
BRÜT ALAN: 59.00 m<sup>2</sup>

7  
NOLU MESKEN  
NET ALAN: 43.00 m<sup>2</sup>  
BRÜT ALAN: 59.00 m<sup>2</sup>

11  
NOLU MESKEN  
NET ALAN: 43.00 m<sup>2</sup>  
BRÜT ALAN: 59.00 m<sup>2</sup>

10  
NOLU MESKEN  
NET ALAN: 43.00 m<sup>2</sup>  
BRÜT ALAN: 57.00 m<sup>2</sup>

9  
NOLU MESKEN  
NET ALAN: 43.00 m<sup>2</sup>  
BRÜT ALAN: 57.00 m<sup>2</sup>

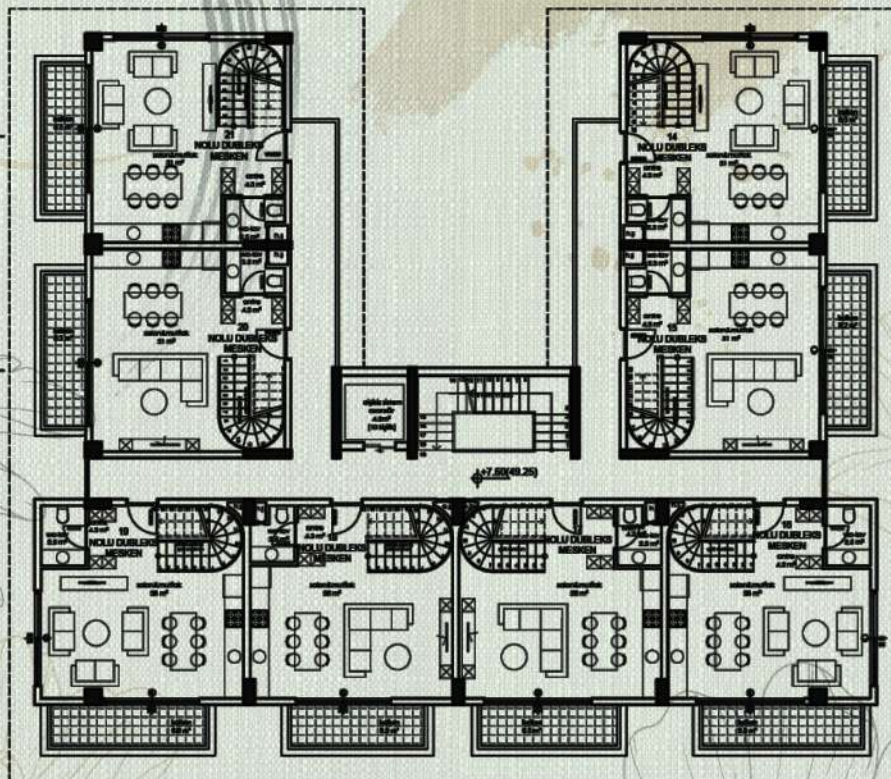
8  
NOLU MESKEN  
NET ALAN: 43.00 m<sup>2</sup>  
BRÜT ALAN: 59.00 m<sup>2</sup>

21  
NOLU DUBLEKS MESKEN  
NET ALAN: 43.00 m<sup>2</sup>  
BRÜT ALAN: 59.00 m<sup>2</sup>

20  
NOLU DUBLEKS MESKEN  
NET ALAN: 43.00 m<sup>2</sup>  
BRÜT ALAN: 59.00 m<sup>2</sup>

14  
NOLU DUBLEKS MESKEN  
NET ALAN: 43.00 m<sup>2</sup>  
BRÜT ALAN: 59.00 m<sup>2</sup>

15  
NOLU DUBLEKS MESKEN  
NET ALAN: 43.00 m<sup>2</sup>  
BRÜT ALAN: 59.00 m<sup>2</sup>



19  
NOLU DUBLEKS  
MESKEN  
NET ALAN: 43.00 m<sup>2</sup>  
BRÜT ALAN: 59.00 m<sup>2</sup>

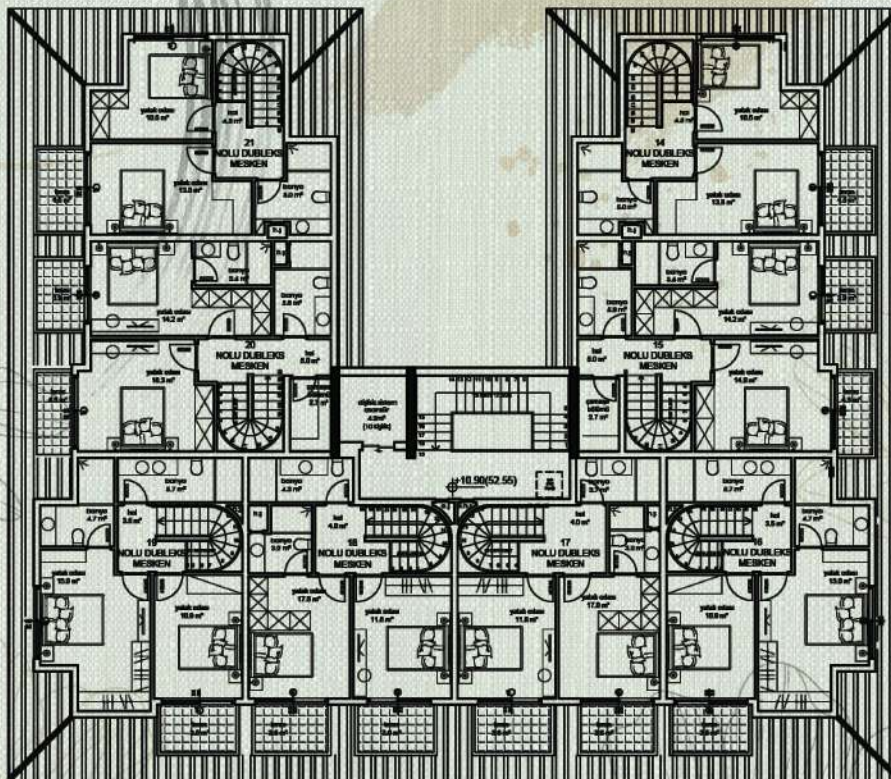
18  
NOLU DUBLEKS  
MESKEN  
NET ALAN: 43.00 m<sup>2</sup>  
BRÜT ALAN: 57.00 m<sup>2</sup>

17  
NOLU DUBLEKS  
MESKEN  
NET ALAN: 43.00 m<sup>2</sup>  
BRÜT ALAN: 57.00 m<sup>2</sup>

16  
NOLU DUBLEKS MESKEN  
NET ALAN: 43.00 m<sup>2</sup>  
BRÜT ALAN: 59.00 m<sup>2</sup>

21  
NOLU DUBLEKS MESKEN  
NET ALAN: 44.00 m<sup>2</sup>  
BRÜT ALAN: 51.00 m<sup>2</sup>

20  
NOLU DUBLEKS MESKEN  
NET ALAN: 54.00 m<sup>2</sup>  
BRÜT ALAN: 64.00 m<sup>2</sup>



14  
NOLU DUBLEKS MESKEN  
NET ALAN: 44.00 m<sup>2</sup>  
BRÜT ALAN: 52.00 m<sup>2</sup>

15  
NOLU DUBLEKS MESKEN  
NET ALAN: 54.00 m<sup>2</sup>  
BRÜT ALAN: 64.00 m<sup>2</sup>

19  
NOLU DUBLEKS  
MESKEN  
NET ALAN: 51.00 m<sup>2</sup>  
BRÜT ALAN: 59.00 m<sup>2</sup>

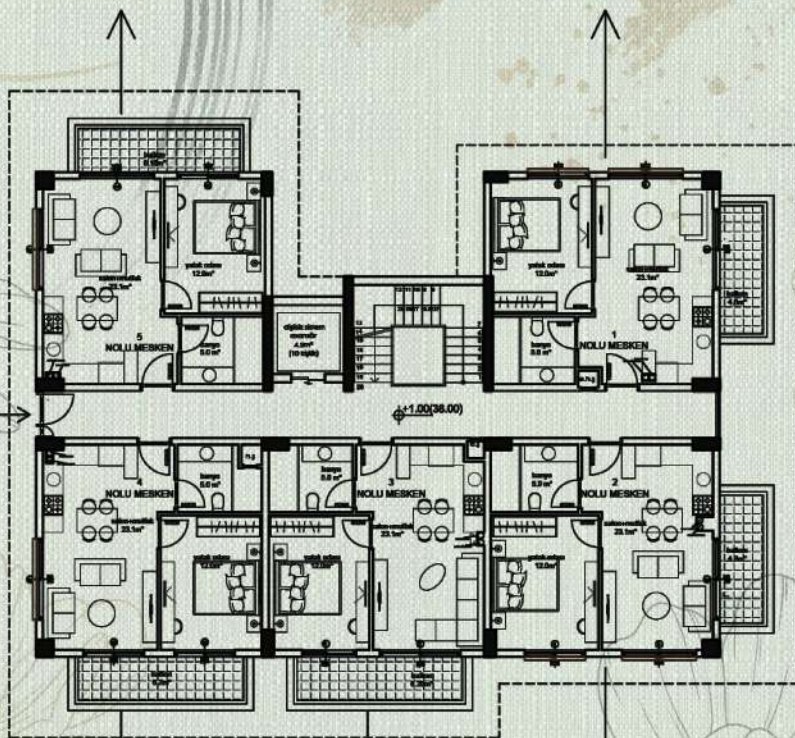
18  
NOLU DUBLEKS  
MESKEN  
NET ALAN: 46.00 m<sup>2</sup>  
BRÜT ALAN: 57.00 m<sup>2</sup>

17  
NOLU DUBLEKS  
MESKEN  
NET ALAN: 43.00 m<sup>2</sup>  
BRÜT ALAN: 57.00 m<sup>2</sup>

16  
NOLU DUBLEKS MESKEN  
NET ALAN: 51.00 m<sup>2</sup>  
BRÜT ALAN: 59.00 m<sup>2</sup>

5  
NOLU MESKEN  
NET ALAN: 44.40 m<sup>2</sup>  
BRÜT ALAN: 60.00 m<sup>2</sup>

1  
NOLU MESKEN  
NET ALAN: 44.00 m<sup>2</sup>  
BRÜT ALAN: 59.00 m<sup>2</sup>



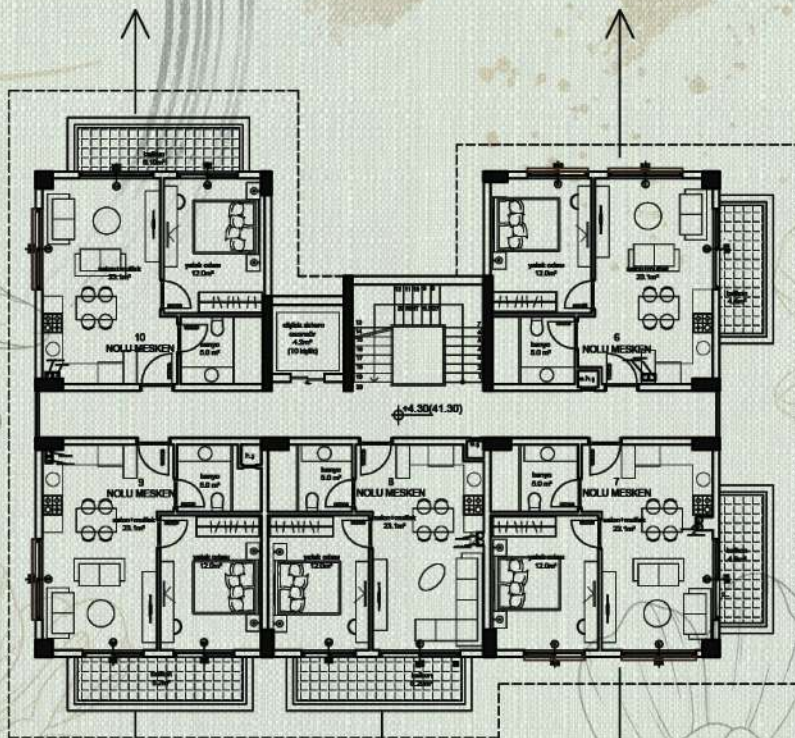
4  
NOLU MESKEN  
NET ALAN: 44.40 m<sup>2</sup>  
BRÜT ALAN: 60.00 m<sup>2</sup>

3  
NOLU MESKEN  
NET ALAN: 42.00 m<sup>2</sup>  
BRÜT ALAN: 56.00 m<sup>2</sup>

2  
NOLU MESKEN  
NET ALAN: 44.80 m<sup>2</sup>  
BRÜT ALAN: 59.00 m<sup>2</sup>

10  
NOLU MESKEN  
NET ALAN: 44.40 m<sup>2</sup>  
BRÜT ALAN: 60.00 m<sup>2</sup>

6  
NOLU MESKEN  
NET ALAN: 44.00 m<sup>2</sup>  
BRÜT ALAN: 59.00 m<sup>2</sup>



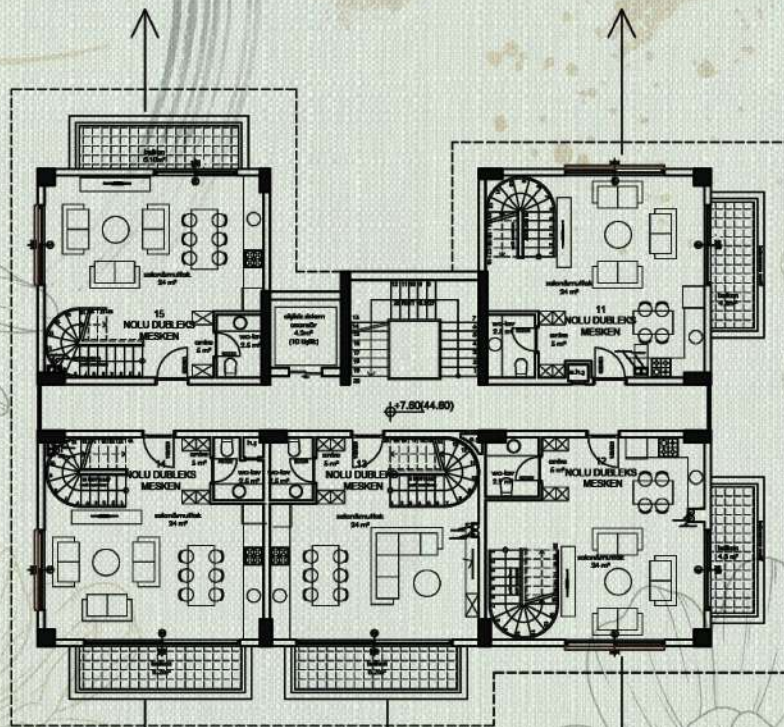
9  
NOLU MESKEN  
NET ALAN: 44.40 m<sup>2</sup>  
BRÜT ALAN: 60.00 m<sup>2</sup>

8  
NOLU MESKEN  
NET ALAN: 42.00 m<sup>2</sup>  
BRÜT ALAN: 58.00 m<sup>2</sup>

7  
NOLU MESKEN  
NET ALAN: 44.80 m<sup>2</sup>  
BRÜT ALAN: 59.00 m<sup>2</sup>

15  
NOLU DUBLEKS  
MESKEN  
NET ALAN: 44.00 m<sup>2</sup>  
BRÜT ALAN: 60.00 m<sup>2</sup>

11  
NOLU DUBLEKS  
MESKEN  
NET ALAN: 44.00 m<sup>2</sup>  
BRÜT ALAN: 59.00 m<sup>2</sup>



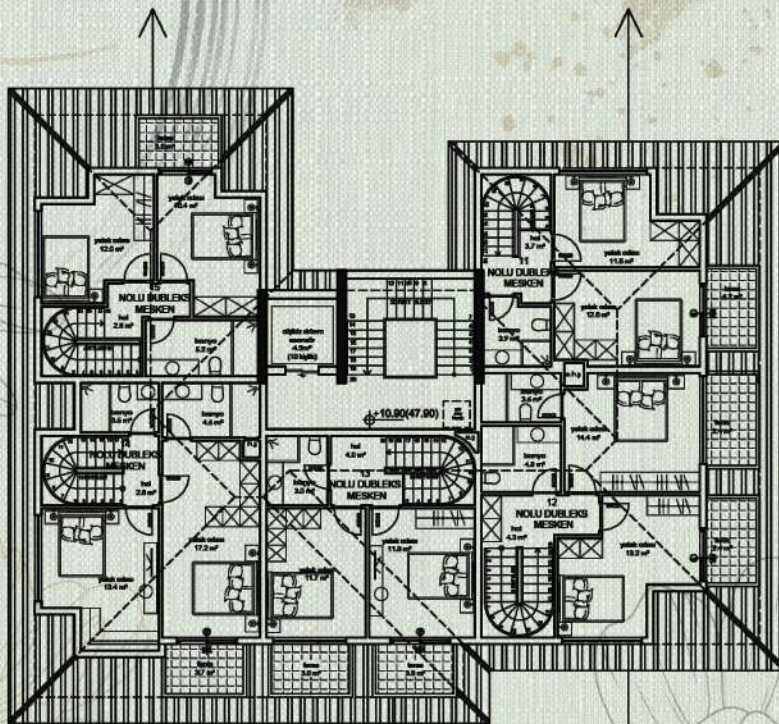
14  
NOLU DUBLEKS  
MESKEN  
NET ALAN: 44.40 m<sup>2</sup>  
BRÜT ALAN: 60.00 m<sup>2</sup>

13  
NOLU DUBLEKS  
MESKEN  
NET ALAN: 42.00 m<sup>2</sup>  
BRÜT ALAN: 58.00 m<sup>2</sup>

12  
NOLU DUBLEKS  
MESKEN  
NET ALAN: 44.80 m<sup>2</sup>  
BRÜT ALAN: 59.00 m<sup>2</sup>

15  
NOLU DUBLEKS  
MESKEN  
NET ALAN: 42.00 m<sup>2</sup>  
BRÜT ALAN: 51.00 m<sup>2</sup>

11  
NOLU DUBLEKS  
MESKEN  
NET ALAN: 40.00 m<sup>2</sup>  
BRÜT ALAN: 49.00 m<sup>2</sup>



14  
NOLU DUBLEKS  
MESKEN  
NET ALAN: 53.00 m<sup>2</sup>  
BRÜT ALAN: 62.00 m<sup>2</sup>

13  
NOLU DUBLEKS  
MESKEN  
NET ALAN: 42.00m<sup>2</sup>  
BRÜT ALAN: 55.00 m<sup>2</sup>

12  
NOLU DUBLEKS  
MESKEN  
NET ALAN: 55.00 m<sup>2</sup>  
BRÜT ALAN: 65.00 m<sup>2</sup>













## Gardenia Life



: +90 549 590 5050



: [INFO@GARDENIALIFE.NET](mailto:INFO@GARDENIALIFE.NET)



: [SALES@GARDENIALIFE.NET](mailto:SALES@GARDENIALIFE.NET)



: [WWW.GARDENIALIFE.NET](http://WWW.GARDENIALIFE.NET)



: SARAY MAH. GÜZELYALI CAD NO: 34  
ALANYA/ANTALYA